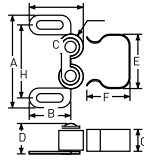


DOUBLE ROLLER CATCH WITH C-CLIP

- › PLASTIC ROLLER
- › INCLUDES MOUNTING SCREWS
- › STEEL CONSTRUCTION

POLY BAGGED WITH UPC



A = 1-3/64" (26.4mm)
 B = 7/8" (22mm)
 C = 1-3/32" (27.7mm)
 D = 1/2" (13mm)
 E = 29/32" (23mm)
 F = 3/4" (19mm)
 G = 3/8" (9mm)
 H = 21/32" (16.9mm)
 I = 7/16" DIA. (11.1mm)



ZINC

CASE QTY.

DOUBLE ROLLER CATCH

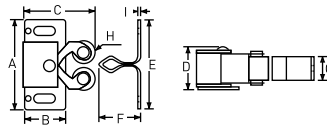
20-1410Z

25

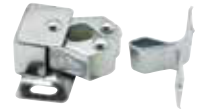
DOUBLE ROLLER CATCH

- › PLASTIC ROLLER
- › INCLUDES MOUNTING SCREWS
- › STEEL CONSTRUCTION

POLY BAGGED WITH UPC



A = 1-1/4" (31.8mm)
 B = 9/16" (14.3mm)
 C = 1-5/64" (27mm)
 D = 19/32" (15mm)
 E = 1-1/4" (31.8mm)
 F = 5/8" (16mm)
 G = 3/8" (9mm)
 H = 5/16" DIA. (7.9mm)
 I = 1/32" (0.8mm)



ZINC

CASE QTY.

DOUBLE ROLLER CATCH

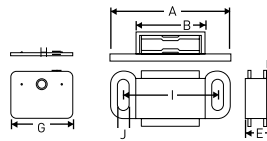
20-1420CH

25

PLASTIC FLUSH MAGNETIC CATCH

- › ZINC PLATED STEEL STRIKE
- › PLASTIC HOUSING WITH MAGNET
- › INCLUDES MOUNTING SCREWS

POLY BAGGED WITH UPC



A = 2-5/16" (52mm)
 B = 1-3/16" (30mm)
 C = 3/4" (20mm)
 D = 1/8" (3mm)
 E = 1/2" (13mm)
 F = 51/64" (20mm)
 G = 1-1/32" (26mm)
 H = 3/64" (1mm)
 I = 1-21/32" C-C (42mm)
 J = 9/64" (3.8mm)



ANTIQUÉ COPPER 11

CASE QTY.

FLUSH MAGNETIC CATCH

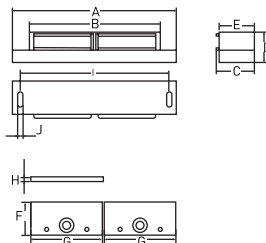
20-1455AC

25

HEAVY LOAD MAGNETIC CATCH

- › ZINC PLATED STEEL STRIKE
- › PLASTIC HOUSING WITH MAGNET
- › INCLUDES MOUNTING SCREWS
- › HOLDING CAPACITY 16 LBS. (7.3 kg)

POLY BAGGED WITH UPC



A = 2-15/16" (74 mm)
 B = 2-3/16" (56 mm)
 C = 5/8" (16 mm)
 D = 1/2" (13 mm)
 E = 5/8" (15.5 mm)
 F = 1-3/16" (30 mm)
 G = 7/8" (22 mm)
 H = 1/16" (1 mm)
 I = 2-9/16" (65 mm)
 J = 1/8" (3 mm)



WHITE

CASE QTY.

HEAVY LOAD MAGNETIC CATCH

20-1465WH

25

MEASUREMENTS SUBJECT TO A 3% VARIANCE

MEASUREMENTS ARE FOR REFERENCE ONLY. TAYMOR RESERVES THE RIGHT TO CHANGE THE PRODUCT SPECS WITHOUT NOTICE. FOR PRODUCT WARRANTY, PLEASE VISIT TAYMOR WEBSITE FOR DETAILS

